

Designing solutions for a positive life

*essentials*  
**2023**



  
**ARTELIA**

**international  
independent  
multi-disciplinary**

Consulting  
Master planning & feasibility  
Design & engineering  
Construction & project management  
Asset & facility management  
Turnkey solutions

**Mobility - Water - Energy - Buildings - Industry**



**8,900**  
employees

**€982 M**  
2023  
turnover

**100%**  
capital held by managers  
and employees



Operating  
in over

**40**  
countries

**100 years**  
of experience

In France,  
more than

**50**  
offices

4 Editorial

**Progress**

- 5 Strengthening our global presence
- 6 Supporting our clients
- 8 Focusing Research & Innovation on sustainability
- 10 Implementing our CSR policy
- 12 Our commitments & objectives ESG for 2025

**Challenges**

- 14 Climate resilience & biodiversity
- 16 Energy transition
- 18 Sustainable use of resources
- 20 Advanced industrial facilities
- 22 Regeneration of the built environment
- 24 More livable cities
- 26 Sustainable & multimodal mobility



SCIENCE  
BASED  
TARGETS



editorial

# BENOÎT CLOCHERET

Chief Executive Officer



## Committed to delivering economic, environmental and social performance

Our ambition is to be a company that is useful to people and to the world. Truly. This aspiration urges us to harmoniously combine the economic, environmental and social dimensions that define true global performance. As daily news reminds us, this balance is delicate to grasp, implement and sustain, even for Artelia, a 100% employee-owned group, fully in control of its strategic orientations.

In our business, this alliance means constantly arbitrating between urban development and safeguarding ecosystems, between new industrial facilities and limiting land artificialisation, but also, let's be honest, between energy ambitions, demands on materials... and the associated costs. A genuine commitment is required from all of us to achieve this challenging goal. Our CSR policy provides both a framework and a guide for action. Combining economic success, environmental action and social commitment is the true compass of our development, as demonstrated by the Group's evolution in 2023.

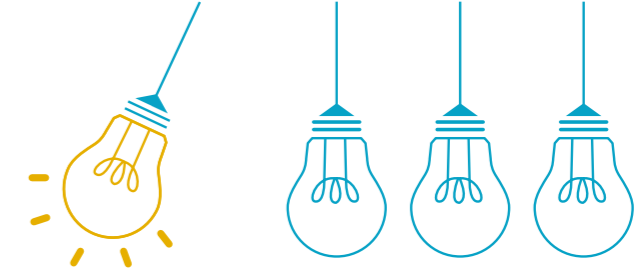
From an economic point of view, Artelia reached a new milestone last year. By welcoming the 1,100 employees of FNX-INNOV, Canada's historic and leading engineering company, Artelia strengthened its position among the world leaders and opened up new opportunities on the North American continent. With the acquisition of MACE, we are also opening a window on India, one of the world's major new economies. These additional strengths, combined with strong organic growth in many sectors, lead Artelia to count nearly 9,000 talents worldwide and to achieve a turnover of €982 million in 2023 (an increase of 18% compared to 2022), while preserving its profitability. Artelia now ranks among the top 15 engineering companies in Europe and the top 50 worldwide.

Economic success, for sure, but also a strong commitment to the environment. Adapting to climate change, preserving resources and protecting biodiversity are now on

everyone's minds. A growing number of our projects involve the development of low-carbon energy production, the implementation of energy efficiency in all sectors of activity, the fight against heat islands in cities, land use planning in the face of rising sea levels, the management of excess or lack of water... Through our TRACE eco-design approach, we mobilize the Group's expertise to help all our clients make the best choices for their projects. Last but not least, 2023 was marked by a strong commitment to the demanding Science Based Target initiative (SBTi). This internationally recognized organization has validated our greenhouse gas reduction trajectory to 2030 as compliant with the objectives of the Paris Agreement.

Mobilization for the environment, without doubt, but also social responsibility. In 2023, we continued to promote our Each&All initiative for diversity and inclusion, because it is vital for everyone to feel good and develop within the Group. In a further commitment to civil society, Artelia has also set up two new partnership chairs with engineering schools and universities (Medelia and Metabolism City), and is now supervising eleven Ph.D. theses, all focusing on ecological transition and sustainability. More than ever, we have stimulated the commitment of Artelia's employees, through skills sponsorship, to associations and NGOs. It was a particularly intense year for the Artelia Foundation, with 46 associations and 50 operations supported worldwide, an activity complemented by a call for projects dedicated to the subjects of the circular economy and «blue carbon».

Finally, we launched our new «Engineering at heart» employer brand in 2023, a powerful affirmation of what makes Artelia a singular company: the opportunity offered to each and every one of us to shape a sustainable world, experience a unique human adventure and be the entrepreneur of our own future. Enthusiastic, isn't it?



progress

# STRENGTHENING OUR GLOBAL PRESENCE

We have taken a further step toward our ambition to be a leading engineering company on the international market with the acquisition of the Canadian company FNX-INNOV, which opens new opportunities for us in North America. At the same time, we have established a position in one of the World's major economies with the creation of ACE in India.

We have also achieved significant growth in Europe, particularly in Italy where we are one of the leading engineering firms. We have strengthened our positions in West Africa and the Asia-Pacific region, with the creation of a subsidiary in Benin and the acquisition of SMC, a Thailand-based marine engineering specialist.



## FNX-INNOV JOINS ARTELIA

Ranked among the top 10 engineering companies in Quebec, FNX-INNOV, with 1,100 employees and a turnover of almost €100 m, has been growing over the past four years. The company has a network of 18 regional offices mainly in Eastern Canada (14 in Quebec and 4 in Ontario, Newfoundland and Labrador and British Columbia).

With 50 years' experience, FNX-INNOV brings cutting edge expertise in infrastructure, the environment and earth sciences, energy, industry, telecommunications and buildings. The company has longstanding partnerships with the City of Montreal and numerous other municipalities, the Quebec Ministry of Transportation, and key energy players such as Hydro One and Hydro Quebec.

progress

# SUPPORTING OUR CLIENTS

NORTH AMERICA

1,100 employees

FRANCE

more than 50 offices

4,300 employees

EUROPE  
(outside France)

2,000 employees

## CONTINUOUS GROWTH IN EUROPE

With a strong presence in Denmark and expanding operations in Spain, Portugal, and the United Kingdom, Artelia has also achieved exceptional growth in Italy and Germany. Artelia Italia consolidated its position as a major national engineering company by developing all of the Group's activities and making remarkable breakthrough into the industrial and mobility sectors. The German subsidiary, bolstered by the integration of ProjektPlan, is now expanding its activities in the energy and industry sectors.

## A NEW PRESENCE IN INDIA

Artelia acquired Mahindra Consulting Engineers (MACE), a company with around 70 employees, founded in 1993 and owned by the Indian industrial firm Mahindra & Mahindra. This engineering company operates in India and Africa on behalf of major international lenders in different business lines, including industrial parks and economic zones, agribusiness and rural transformation, urban development, water and sanitation, and social infrastructure. Renamed Artelia Consulting Engineers limited (ACE), this subsidiary provides a new hub for the Group's development in Asia.

ASIA  
PACIFIC

1,200 employees

AFRICA  
MIDDLE EAST

300 employees

8,900 employees

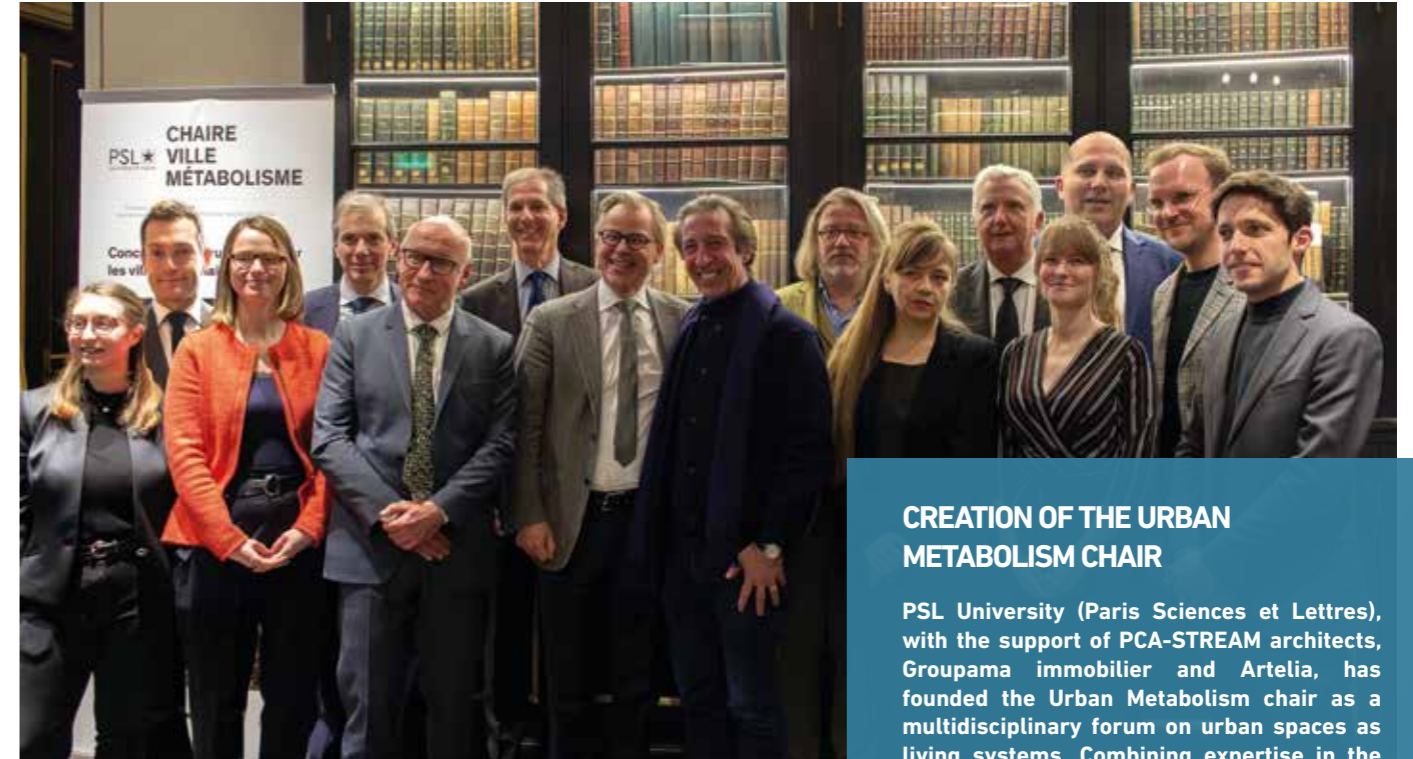
Projects in over 100 countries

Operating in over 40 countries

progress

# FOCUSING RESEARCH & INNOVATION ON SUSTAINABILITY

In line with the Group's values and the 7 societal challenges we aim to address, the Research & Innovation (R&I) activity is ramping up and focusing on sustainable solutions contributing to the ecological transition. Artelia has supported the creation of two new partnership chairs and supervises 11 PhDs on these topics. This collaboration with the academic world strengthens the teams' work on energy optimisation, eco-design, sustainable construction, active mobility, etc.



## CREATION OF THE URBAN METABOLISM CHAIR

PSL University (Paris Sciences et Lettres), with the support of PCA-STREAM architects, Groupama immobilier and Artelia, has founded the Urban Metabolism chair as a multidisciplinary forum on urban spaces as living systems. Combining expertise in the natural sciences, human and social sciences, engineering sciences and the arts, the new chair focuses on today's major issues in architecture and urban studies around the concepts of sustainable, inclusive and desirable cities.

How can the natural sciences contribute to the analysis of cities? Can we bring together urban areas and ecological systems, both made up of different layers constantly evolving, to improve the design of cities, their maintenance, and the quality of life of their inhabitants? Beyond technology, what role do legal, economic, aesthetic and religious standards and values play? These are the issues the Chair aims to explore.



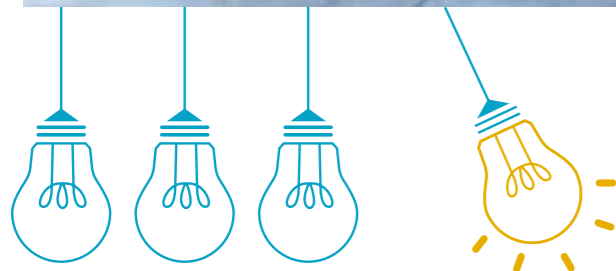
## INAUGURATION OF THE MEDELIA INDUSTRIAL EXCELLENCE CHAIR

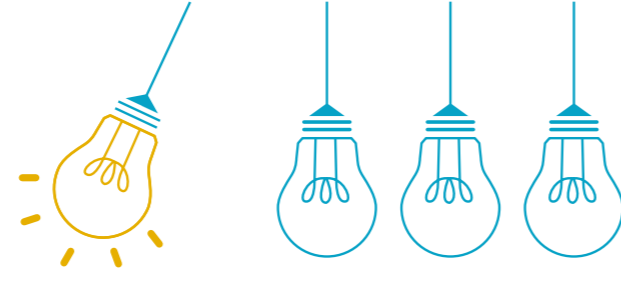
Established with the Grenoble INP Foundation, this new chair focuses on «probabilistic fatigue» analysis of metallic structures, particularly hydraulic assets, to ensure the safety of dams in France. The teaching is provided by three engineering schools (Grenoble INP, Ense<sup>3</sup>, Phelma) and the IUT1 of Grenoble Alpes University. Supported by the Grenoble INP Foundation, thanks to the sponsorship of the Artelia Group and its subsidiary Spretec, the program will be carried out jointly with researchers from the 3SR and SIMaP laboratories.



## FRENCH ENGINEERING GRAND PRIX FOR MÉTHOD'O

Artelia has been awarded the Grand Prix national de l'Ingénierie 2023 (one of France's most prestigious engineering awards) for its eco-planning and co-construction method for regions. The Méthod'o, implemented as part of the Greater Reims stormwater master plan, is based on a range of tools, including advanced digital modelling, enabling stakeholders to identify and visualise the sensitivities of their area to make the most appropriate decisions regarding sustainable development.





*progress*

# IMPLEMENTING OUR CSR POLICY

A new milestone has been reached in terms of Corporate Social Responsibility (CSR). Our policy has been strengthened by the implementation of more ambitious targets and new dedicated governance committees. We have committed to the Science Based Targets (SBTi) initiative, adopting a demanding approach to reducing our greenhouse gas (GHG) emissions by 2030. Our trajectory was officially validated by SBTi in early 2024. At the same time, we have structured our eco-design actions to offer our clients a panel of solutions in all sectors of activity. These efforts have been rewarded with the Platinum ranking, the highest level of distinction awarded by the CSR assessment organisation EcoVadis.

## SBTi



### ARTELIA IN LINE WITH THE PARIS AGREEMENT

The Science Based Targets initiative encourages companies to set targets for reducing their GHG emissions to levels that are compatible with limiting global warming to 1.5°C, in line with the IPCC's recommendations and the Paris Agreement.

Wishing to comply with this objective, Artelia is firmly committed to the SBT

initiative and has carried out in-depth work to meet the rigorous criteria used by this organisation. On 7 February 2024, SBTi approved our trajectories, which entail reducing our absolute emissions by 46.2% on scopes 1 and 2 and 27.5% on scope 3 from 2019 to 2030. A dedicated steering committee has been set up to implement and monitor the action plan.



### OUR CSR PERFORMANCE REWARDED BY ECOVADIS PLATINUM RANKING

EcoVadis is a rating agency evaluating the CSR performance of over 100,000 companies in 175 countries, based on four themes: environment, social & human rights, ethics, responsible purchasing. In 2023, EcoVadis awarded Artelia an overall

score of 83/100, placing our Group among the most virtuous companies (top 1%) and pioneers in terms of environmental, social and governance (ESG) commitments.

## WE SUPPORT



### CONTRIBUTING ACTIVELY TO THE UNITED NATIONS' 17 SUSTAINABLE DEVELOPMENT GOALS

The United Nations Global Compact is the World's largest voluntary commitment to sustainable development. It encourages companies of all sizes to respect ten universal principles (around human rights, labour law, environment and anti-corruption) and to implement 17 SDGs

(Sustainable Development Goals). Since 2018, Artelia has been an active member and reports every year to its stakeholders on the progress made on its commitments to the Global Compact.

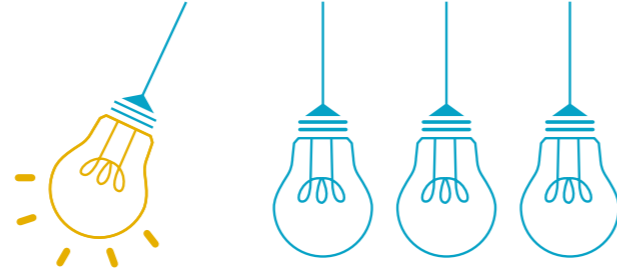
## TRACE

Track - Reduce - Avoid - Carbon - Ecology

### ARTELIA TRACES THE WAY IN ECO-DESIGN

Integrating environmental, social and economic sustainability into the design of all projects is critical to respond to the climate emergency, biodiversity decline and resources crisis. This eco-design approach is increasingly important in our activities. Through the TRACE method, Artelia is mobilising the Group's expertise, by structuring its services and strengthening the training of its teams, enabling them to help all stakeholders in making the best choices for their projects.

Eco-design not only allows for anticipating and integrating environmental, regulatory and insurance developments, but also enhances developments by optimising their functionality and reducing their overall costs. It also plays a significant role in securing the support of the various stakeholders for these projects.



progress

# OUR COMMITMENTS & OBJECTIVES ESG FOR 2025

Artelia has based its CSR policy on 4 main pillars and has committed to 20 ambitious targets, meeting ESG (environmental, social and governance) criteria, to be achieved by 2025.

The Group's progress is assessed every year and the results are published in the extra-financial performance report.

## Ensure responsible governance

OUR COMMITMENTS	OUR TARGETS
<ul style="list-style-type: none"> <li>Assert ourselves as a pioneer engineering company in CSR</li> <li>Remain exemplary in ethical matters</li> <li>Motivate employees by sharing the financial performance created</li> <li>Preserve our independence by increasing the number of employees becoming shareholders</li> </ul>	<ul style="list-style-type: none"> <li>Carry out a detailed assessment of ESG risks and opportunities on 100% of our significant offers based on the European taxonomy and the SDGs</li> <li>Train 100% of our employees and freelancers yearly on ethical risks</li> <li>Integrate ESG clauses in 100% of our purchase contracts and carry out yearly targeted audits</li> <li>Share at least one-third of the profit generated by operational activity</li> <li>Promote employee shareholding to at least 50% of employees</li> <li>Encourage employee shareholding among young people with an initial objective of at least 50% shareholders under the age of 45</li> </ul>



## Protect our environment

OUR COMMITMENTS	OUR TARGETS
<ul style="list-style-type: none"> <li>Align Artelia Group's carbon footprint with the objectives of the Paris Agreement through our commitment to the Science-Based Targets Initiative (SBTI)</li> <li>Contribute actively to reflections on reducing the carbon emissions of our customers' projects</li> <li>Prompt our customers to commit to an eco-design approach to projects and eco-monitoring of sites integrating biodiversity aspects</li> </ul>	<ul style="list-style-type: none"> <li>Reduce the carbon footprint of our direct emissions (facilities and vehicle consumption) to meet the "1.5°C" trajectory (scopes 1 and 2 in absolute value and intensity per employee)</li> <li>Reduce the carbon footprint of our indirect emissions (mainly travel) to respect the "well below 2°C" trajectory (scope 3, in absolute value)</li> <li>Develop internal expertise, in particular by training 100% of our project managers in methods and tools dedicated to sustainable design / monitoring of projects</li> <li>Promote a sustainable design / monitoring approach on 100% of our significant projects</li> </ul>



## Develop our human capital

OUR COMMITMENTS	OUR TARGETS
<ul style="list-style-type: none"> <li>Embrace a "zero accident goal" safety culture</li> <li>Foster the commitment and well-being of our staff members</li> <li>Promote women empowerment within the company</li> <li>Accelerate inclusiveness</li> <li>Enable stimulating career paths</li> </ul>	<ul style="list-style-type: none"> <li>Achieve a workplace accident frequency rate of less than 3.25 and aim for zero serious accidents</li> <li>Aim for an average of 8/10 on "Commitment" and "Well-being" indicators in the annual employee survey</li> <li>Achieve 25% of female managers and in executive positions</li> <li>Make 100% of our employees aware of the "Each&amp;All" Diversity and Inclusion approach every year</li> <li>Enable 100% of our employees to access presence-based or digital training each year</li> <li>Co-build new professional opportunities for each employee at least every three to five years</li> </ul>



## A commitment to civic and humanitarian causes

OUR COMMITMENTS	OUR TARGETS
<ul style="list-style-type: none"> <li>Contribute to the appeal of scientific professions</li> <li>Encourage women to join engineering professions</li> <li>Commit to the common good through the Artelia Foundation</li> </ul>	<ul style="list-style-type: none"> <li>Support 15 research programs through doctoral actions or professorial chairs in order to improve Artelia's social impact</li> <li>Participate in five programs aimed at promoting engineering professions among women</li> <li>Achieve 500 annual days of missions for volunteering missions</li> <li>Target an annual investment of at least 3% of the Group's operating income into the foundation</li> </ul>



## Adapting Lacanau to coastal erosion - France

To prevent the retreat of the coastline, the city of Lacanau is working with local stakeholders as part of a Coastal Development Partnership Project (PPA). Artelia is supporting them in this process by carrying out a multi-thematic technical analysis, developing strategic guidelines, providing scenarios for development up to the horizon 2100 and proposing innovative operational solutions.



challenges

# CLIMATE RESILIENCE & BIODIVERSITY

Climate change and biodiversity degradation are two major issues that require careful attention in all current and upcoming projects. Managing coastal retreat, dealing with heat islands, rethinking stormwater management, improving flood protection, preventing the damage to living environments, and preserving ecosystem diversity are all key issues that we are currently addressing together with national and local authorities.

### Reducing the impact of rainwater in Casablanca - Morocco

Artelia is carrying out studies for Lydec (the public utilities operator responsible for water, sewerage and electricity management) to reinforce the eastern drainage system, in order to limit flooding caused by rainwater in the Greater Casablanca area.

### Creating a resilient urban district in a flood-risk area in Nantes - France

In the Greater Nantes area (Western of France), Artelia works within a team led by Obras architects to design a resilient urban district on a former industrial site along the Loire river, partly subject to flooding, with a priority on reducing soil sealing and re-vegetalising the site. This comprehensive, cross-disciplinary approach to levelling, stormwater management and the reuse of site soil has resulted in a solution which promotes resilience to flooding and the freshness of the future district.

### Restoring the natural course of the Drac river - France

Our teams studied the restoration of a natural morphological erosion dynamic and the regeneration of ecologically functional areas on the Drac river upstream of Grenoble, as part of a flood prevention action program (PAPI).

### Limiting light pollution in the Brière Park - France

Located on the Guérande peninsula, the Brière regional nature park, covering an area of 56,900 ha, has appointed the Luminescence, Artelia, Terroiko and DarkSkyLab consortium to carry out an inventory of its natural heritage and mapping light pollution. The objective is to draw up a «dark grid» to protect nocturnal biodiversity, specify guidelines regarding public lighting and create communication tools.



### RESILIENCE TO CLIMATE CHANGE IN MIDDELFART DENMARK

Artelia assisted the municipality of Middelfart in finding a balanced level of protection against floods caused by heavy rainfall. Our teams carried out around one hundred flood calculations, and developed 25 planning solutions, assessing the cost of damages and the investments needed for the the facilities.





## Commissioning of the Rusumo Falls hydroelectric scheme Rwanda - Tanzania

Located on the border between Tanzania, Rwanda and Burundi, this new 80 MW hydroelectric scheme will increase the capacity of the East African region to supply low-carbon electricity. Over a period of ten years, Artelia contributed to all design phases and construction supervision of the project, which required overcoming several technical challenges, particularly in adapting to the limited land available.

# challenges ENERGY TRANSITION

Increasing the production of renewable and low-carbon energy, implementing energy efficiency in all sectors of activity and developing electricity transportation and distribution infrastructures remain our main targets for the energy transition.

### A Golden Age for District Heating - Denmark

By increasing the use of renewable energy sources, Denmark is expected to reduce the climate impact of district heating by approximately 80% over the next 50 years. Artelia is supporting several operators, including Norfors and Vestforbrænding, in their expansion projects by studying and implementing new networks operating with renewable energies.

### Providing technical assistance for Newheat's fund-raising - France

Artelia Consulting contributed to an investment supported by the management company Swen Capital

Partners to assess the technical and economic relevance of the solution and strategy developed by Newheat, a specialist in the supply of solar and recovered heat to large-scale heat consumers.

### Installation of a FSRU in the port of Brunsbüttel - Germany

Artelia was involved in the installation and commissioning of a floating LNG storage and regasification unit in the German port of Brunsbüttel. Connected to the national grid, it will contribute to the country's natural gas supply.

### Energy performance contract for La Rochelle - France

The La Rochelle urban community wants to improve the performance of its three swimming pools by reducing their energy consumption by 20% and their carbon footprint by 40%. Artelia is committed to achieving this result by managing the entire renovation project (from design to works) and monitoring operations over a 10-year period.

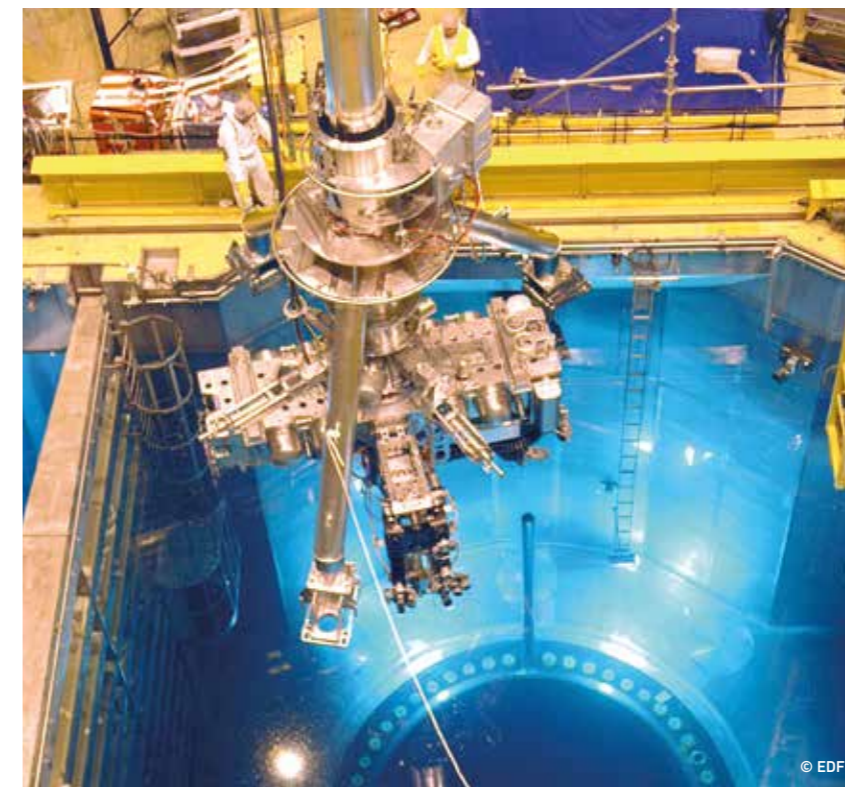
### Strengthening electricity transmission and distribution infrastructures - Worldwide

The energy transition requires an increased electrification of uses, in turn leading to redevelopment of transmission-distribution networks. Artelia has been involved in many projects worldwide, such as the interconnection of the

northern and southern networks of Cameroon and the modernization of the Waasigan substations in Canada. The Group is also involved in the strengthening of aerial and underground lines for the French operator RTE.

### A 600 MW wind project between Laos and Vietnam

Artelia is appointed by Monsoon Wind Power Company Limited as Lender Environmental and Social advisor to the ADB and group of lenders, for the development of the Monsoon Wind Power project, located in the provinces of Sekong and Attapeu, Laos. This large wind farm (133 wind turbines for a cumulated capacity of 600 MW) is going to be connected to Vietnam's national Grid thanks to a cross-border HV line of 22 km.



### BOOSTING NUCLEAR POWER IN FRANCE

As a key player in the French nuclear industry, Artelia is carrying out new studies for EDF to keep the existing facilities in activity (water production and effluent treatment) and to build the first EPR 2 reactors at Penly (design of pools, sumps and covers). Our teams are also working with Orano to provide a turnkey facility for the fuel reprocessing plant at La Hague.

challenges

# SUSTAINABLE USE OF RESOURCES

The consumption of natural resources continues to grow, causing tensions and shortages, as well as serious ecological damage. Better managing these resources is one of the key challenges for urban development and industries. As long-standing experts in the water cycle, we are also at the forefront of sustainable materials and construction, exploring opportunities offered by biomaterials, reuse, reversibility and more.

## Implementing reversibility for Universeine - France

Built on an industrial wasteland in the Greater Paris region (Saint-Denis), Universeine was designed as an athletes' accommodation area intended to be converted into a sustainable living district after the 2024 games. Reversibility was at the heart of Artelia's approach, providing design studies and works supervision of a complex of residential and tertiary buildings in this exemplary eco-district in terms of sustainable construction, green spaces and biodiversity.

## Improving clean water supply - Saudi Arabia

Artelia has provided engineering services for several large-scale water infrastructure projects in the eastern region of Saudi Arabia, helping to meet the country's long-term clean water challenges. In particular, our

teams carried out detailed engineering design for a major water improvement project encompassing storage reservoirs, pumping stations, chlorination facilities and an extensive pipeline network. Our scope of work spanned civil, structural, mechanical and electrical disciplines.

## Increasing use of water desalination - Egypt

The creation of desalination plants to overcome shortages of freshwater resources is a common trend in many water-stressed countries. Egyptian authorities and the European Bank for Reconstruction and Development (EBRD) have commissioned Artelia to study the creation (via public-private partnerships) of several desalination plants located along the Mediterranean and Red Sea coastline.



## HALIOTIS 2, AN OUTSTANDING WASTEWATER TREATMENT PLANT - FRANCE

Eau d'Azur, the Water and Wastewater Authority of the Nice Côte d'Azur Metropolis, undertook the complete rehabilitation of its wastewater treatment plant, Haliotis, in line with its environmental transition policy. A consortium led by SUEZ group, has been appointed, with Artelia as integrated project manager, to build an infrastructure designed to meet very high environmental standards, combining sobriety and energy recovery, water resource preservation, and extensive landscape integration.

## Paving the Way for Bio-based Construction – Denmark

As part of an interdisciplinary initiative, Artelia is assisting the philanthropic association Realdania in exploring how biomaterials can play a more significant role in Danish construction and contribute to reducing the carbon footprint. The initial step involves mapping out needs and potential uses, ultimately leading to the development of a product catalog based on life cycle assessments (LCAs) and other performance criteria such as moisture, fire safety, structural qualities, and acoustics.



## Battery assembly line for ARTS Energy - France

Artelia has completed the turnkey construction of an assembly line for ARTS Energy, a company specialising in the design and manufacture of high-performance batteries for industry. Able to produce up to 100,000 batteries a year, this optimised assembly line includes a robot that performs electrical welding and tin soldering and monitors these operations using a 3D profilometer.

challenges

# ADVANCED INDUSTRIAL FACILITIES

The rising cost of energy, the pressure to decarbonise, changes in environmental regulations and the sovereignty strategies of governments are leading to industrial reinvestments, resulting in increased engineering needs. We meet these expectations all over the world, working in all sectors, particularly in strategic areas such as microelectronics, healthcare, and electric mobility.

### Effluent treatment facility for Syensqo - France

At its Tavaux site, the Belgian chemical group Syensqo is developing the production of high-performance polymers, in particular PVDF (polyvinylidene fluoride) used in the manufacture of lithium-ion electric batteries. Artelia is involved in this project by managing the engineering, procurement and construction (EPCM) of a facility that will enable Syensqo to achieve its target of reducing freshwater consumption by 25% by 2030.

### Recovery of flared gas on the Dalia FPSO - Angola

As part of its CFR (Carbon Footprint Reduction) plan, TotalEnergies aims to reduce gas emissions from

its oil and gas production activities. Friedlander has awarded Artelia the detailed design of a recovery system for TotalEnergies Dalia FPSO (Floating Production Storage and Offloading). This new module will capture the flared gas and send it to a processing unit.

### Modernization of the Hitachi Energy transformer plant in Cordoba - Spain

Hitachi Energy wanted to adapt its Cordoba facilities to changing needs (industry 4.0, sustainability...) and called on Artelia to develop the overall project plan and manage construction. Our teams are involved in all aspects of the general refurbishment project (industrial buildings, offices, canteen, new roads, etc.), giving priority to environmentally friendly practices and materials.

### Highlands Coffee Roastery - Vietnam

Producer and distributor of coffee-based products, the Vietnamese coffee shop chain Highlands Coffee has decided to build a new roasting plant in the province of Ba Ria - Vung Tau, in southern Vietnam. The company entrusted Artelia with the design and construction of the plant's production and amenity buildings.

### A new gigafactory for ACC in Termoli - Italy

Automotive Cells Company (ACC) has decided to create a new Gigafactory in Termoli, southern Italy, dedicated to the production of high-performance lithium-ion batteries, including clean and dry rooms, production buildings and HV/MV substation. It has entrusted a consortium co-led by Artelia with the basic design, project management and environmental

permitting. Artelia plays a key role in the plant's detailed engineering, and together with ACC has defined solutions to reduce the environmental impact of the production process (automatic detection and pollutant collection systems).

### Development and modernisation of Lavera site - France

Artelia has been awarded a multi-disciplinary project management framework contract by the Petroineos and Ineos (Chemicals, Derivatives and Technologies) consortium for its facilities at the Lavera site, one of the largest refineries in the South of France. Our teams support this client in their objectives of optimizing investment budget, sustainable energy management, and HSE risk control.



### A NEW LABORATORY FOR AGC BIOLOGICS - DENMARK

As one of the leading global firms in pharmaceutical outsourcing, Contract Development and Manufacturing Organizations (CDMO), AGC Biologics assists drug manufacturers throughout the product development phases. Artelia has consulted AGC for over 10 years with the latest project being the design of one of its new laboratories in close collaboration with the relevant researchers and technicians.

## A wide range of projects in the healthcare sector – Benin, Italy, United Kingdom

In Benin, Artelia contributed to the development of the national medical program and is involved in the rehabilitation and construction of nearly a dozen hospitals of various sizes. This is in addition to the project management of the two Togbin University Hospitals already under delivery and it will contribute to an overall improvement of bed capacity and the quality of healthcare in the country.

In Italy, our teams are involved in the creation of the new hospital in Cremona, a unique establishment both in terms of its environmental integration and its connection to the city, as well as its management of patient and family care.

In the United Kingdom, Artelia is embedded within the Estates Strategy Team at the Whittington Health NHS Trust to assist in the redefinition of the provision of Maternity Services in the area of North Central London. We are supporting the Trust with the challenges of leading the multiple clinical teams, designers and contractor through the process of converting Victorian buildings into new facilities that will deliver incredible 21st Century, leading edge maternity care.



challenges

# REGENERATION OF THE BUILT ENVIRONMENT

New construction of office buildings, a key element in real estate development, is undergoing a crisis in the most-advanced countries. However, environmental regulations are increasing the need for renovation and modernization, as well as the development of specific building sectors, such as healthcare facilities and data centers. Covering all kinds of building projects, we are fully mobilized to meet these changing needs.

### Regeneration of Torri EUR in Rome – Italy

Built in the 1960s for the Ministry of Economy and Finance, Torri EUR is now in a highly degraded condition. Artelia was appointed to transform this 70,000 m<sup>2</sup> complex into a high-quality office complex. Energy efficiency, ergonomic workspaces, and occupant comfort are at the heart of the restructuring program, aiming for the highest levels of certification (LEED, WELL, WiredScore).

### IT business park in Trichy – India

Artelia is providing design engineering and project management for a high-rise building (100,000 m<sup>2</sup> of floor area) within the new business park in the city of Tiruchirapalli (Trichy). This complex meets a growing demand for office buildings in the state of Tamil Nadu, which aims to strengthen its position as an emerging centre in the information technology sector.

### Deployment of L'Orange Bleue fitness centres – France

Well-known for its skills in fitness centre development, Artelia brings its expertise to the roll-out of the L'Orange Bleue brand in France. Our teams assist the brand and its franchisees in the preparation and submission of their administrative applications, and then supervise the construction works, while being respectful of the environment and giving priority to local companies.

### Renovation of the Four Seasons Firenze – Italy

As an iconic hotel in Florence, the Four Seasons Firenze aims to align with international standards for luxury hotels and the specific evolutions of the brand. Our teams are responsible for engineering, project management, and supervising the renovation work on several components of the hotel (Villa Ruspoli, Palazzo della Gherardesca...), implementing a sustainable strategy focused on energy efficiency and LEED certification.



### NEW TIMBER FACADES FOR GROUPAMA'S HEAD OFFICE – FRANCE

In partnership with Kardham architectural group, Artelia and RFR (our subsidiary specialising in complex envelopes and structures) were involved in the design and complete project management of this extension project on rue d'Astorg in the heart of Paris. A new 1,100 m<sup>2</sup> timber-framed façade was added, allowing the office space capacity to be extended and meeting the requirements of the tertiary sector decree (reduced energy consumption by 50% by 2040).

challenges

# MORE LIVABLE CITIES

As cities keep growing, especially in developing countries, they still require strengthening their fundamental infrastructure for water management, energy, mobility, and sanitation. Even the most well-equipped urban areas are striving to reduce their carbon footprint, reconsider their land use and decrease their urban density in favor of increased natural areas. We address these different challenges and needs.

### Development of the Bispevika Waterfront - Norway

Replacing former port and industrial areas, vibrant new neighborhoods are emerging along the waterfront of Oslo. The latest addition, Bispevika, was developed in collaboration with Danish architect Vandkunsten and received the «Best Construction Project 2022» award. Our subsidiary, Dr.techn. Olav Olsen, led the structural design of the Bispevika project. Built over the sea and on very poor-quality soil, it required the implementation of an economically and reliably waterproofing solution, utilizing steel fiber reinforcements.

### Requalification of the Mails in Orléans - France

In line with the ecological transition objectives of the urban area, this project involves transforming a major thoroughfare into calm and renatured urban spaces. Artelia is in charge of the design and

works supervision, which includes major enhancements such as transforming 2.5 km of boulevards and public spaces, rerouting a tramway line, and constructing an underground parking facility.

### Rehabilitation and redevelopment of the Akouédo landfill into a city park - Ivory Coast

Since 2018, the Ivorian government has been committed to a more environmentally-friendly solid waste management policy in the Abidjan district, leading to the closure of the Akouédo open-air landfill. Artelia is assisting the Ministry of Hydraulics, Sanitation and Hygiene with the technical aspects of rehabilitating and transforming this nearly 100-hectare site into a city park. The park will be housing leisure areas, sports facilities and a recycling training centre.

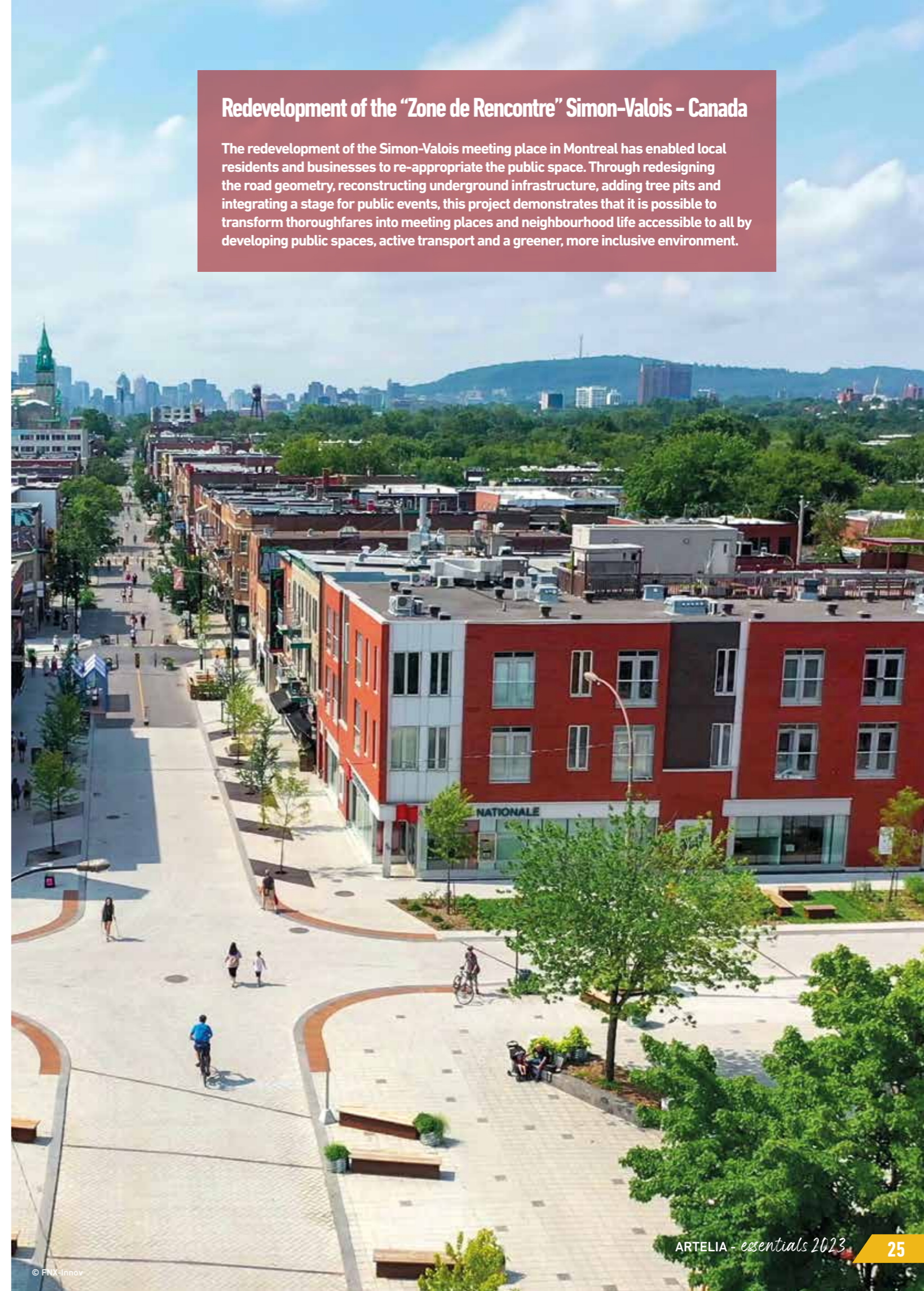


### REDEVELOPMENT OF THE RHÔNE RIVER BANKS IN LYON - FRANCE

After transforming the quays on the left bank river about fifteen years ago, Lyon Metropolis decided to redevelop part of the right bank, over a length of 2.5 km and a width of 60 m, an area mostly used by cars, with 8 lanes of traffic. Artelia is in charge of the design and supervision of this project, which aims to reconnect the city with the river, encourage active modes of transport, reintroduce vegetation to the site and enhance the quayside's architectural heritage.

### Redevelopment of the "Zone de Rencontre" Simon-Valois - Canada

The redevelopment of the Simon-Valois meeting place in Montreal has enabled local residents and businesses to re-appropriate the public space. Through redesigning the road geometry, reconstructing underground infrastructure, adding tree pits and integrating a stage for public events, this project demonstrates that it is possible to transform thoroughfares into meeting places and neighbourhood life accessible to all by developing public spaces, active transport and a greener, more inclusive environment.





**Intense activity in the field of metro systems - France**

With the Greater Paris, Lille, Rennes and Toulouse, Artelia is involved in most of France's metro extension projects. Our teams are completing their assignment on line 11 of the Grand Paris Express, with six new stations expected to welcome passengers in spring 2024. At the same time, our specialists carry out studies on line 15 West-South and supervise the first phase of works on line 18. In Toulouse, the project is also under way, while in Rennes, the design of the extension to the JF Kennedy terminus station, with a view to increasing the capacity of line A, has been finalised. The Lille testing platform, aimed to test and reproduce the operation of a fixed-station VAL train, should be fully operational in 2024.

*challenges*

# SUSTAINABLE & MULTIMODAL MOBILITY

Transport infrastructure are key pillars of our societies and continue to expand and modernize. Strengthening public and low-carbon modes of transport, increasing emphasis on active mobility, construction and renovation of infrastructure, and the development of port and airport facilities are just some of the wide ranges of activities we are involved in.

**Green Mobility Plans for Brøndby, Copenhagen and Odense - Denmark**

All communities aim to have urban transport systems that are accessible, efficient, comfortable, preserve the health of users, and have a reduced climate and ecological footprint. Drawing on travel studies and modeling tools, Artelia is assisting several Danish cities in understanding their needs and opportunities and planning the development of greener mobility within their territories.

**45 km of new lines for Genoa's Filobus - Italy**

Artelia is leading a consortium of Italian engineering firms in the development of the city of Genoa's trolleybus network, a flexible, low-CO2-emission mass transit

system. This extension comprises 45 km of new lines, spread over the 4 axes of the network, and includes the introduction of "flash charging" technologies and the creation of catenary-free sections. Our teams are involved in managing the various components of the project (roadways, stops and terminals, traffic lights, force network, logistics, telecommunications, etc.).

**A strong comeback for cycling - France**

Eclipsed in recent decades by other modes of transport, particularly the car, the use of bicycles is making a strong comeback in many countries and is now almost systematically included in urban development projects as a sustainable mobility solution. In France, where projects are multiplying, Artelia is involved in the creation of a 250 km cycle network for the Greater Lyon

Authority and is managing the widening of the Lake Annecy greenway, a 15.3 km cycle and pedestrian infrastructure, one of the country's busiest cycle paths in summer.

**Deconstruction of the Champlain Bridge - Canada**

The deconstruction of the Champlain Bridge, built in 1962 over the St. Lawrence River, has just been completed, leaving behind some characteristic elements of the bridge that will be used in a waterfront redevelopment project for the benefit of local residents. Our teams supervised the dismantling of the bridge ensuring the safety of people, the continuity of maritime activities and the protection of the new bridge, while ensuring rigorous environmental management of the site, including the recovery and treatment of materials and the preservation of ecosystems.

**Extension of the industrial port of Map Ta Phut - Thailand**

Our maritime subsidiary SMC is contributing to the design and construction of a major extension of the existing port which will facilitate the development of a new LNG import terminal. The project includes the construction of two berths, able to accommodate Q-max vessels, and various infrastructure (polder, connecting bridge, breakwater, etc.).

**Regeneration of the Brive-Périgueux railway line - France**

SNCF-Réseau has awarded Artelia the design and work supervision of the modernisation of this 72 km line to recover its nominal level of service. The project involves the regeneration of the platform and track, the rehabilitation of engineering structures and the reinforcement of embankments.



**RENOVATION OF THE LONG BIEN BRIDGE - VIETNAM**

This 1,680 m metal bridge, commissioned in 1902 to cross the Red River in Hanoi, is now in a critical condition. The city's People's Committee entrusted Artelia with the task of studying its renovation, carrying out a complete diagnostic and creating a digital twin of the structure. While the central objective is to guarantee the safety of users, the project also aims to enhance the value of a heritage structure and adopt a sustainable approach to its renovation.

*please refer to our annual publications*

- Extra-financial performance report
- Financial statements

---

[www.arteliagroup.com](http://www.arteliagroup.com)

