

OUR GROUP

40

OFFICES IN  
35 COUNTRIES

35

OFFICES IN  
FRANCE

CERTIFICATIONS\*

ISO 9001-2008

ISO 14001

OHSAS 18001

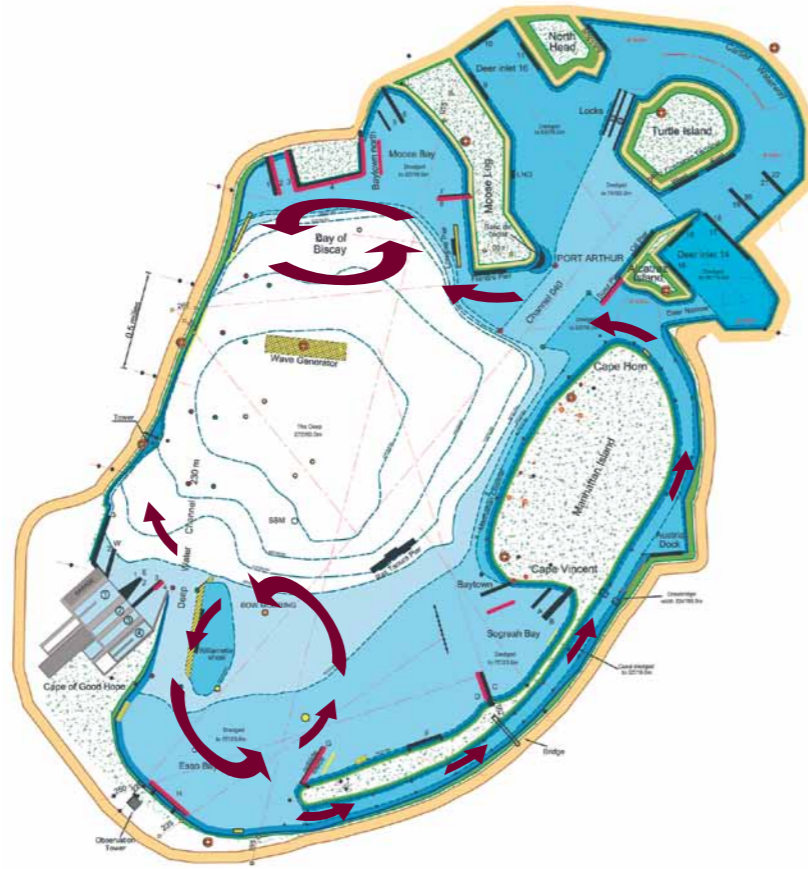
QUALIFICATION

OPQIBI

HARD WORK IN A PEACEFUL ENVIRONMENT

WE STILL HAVE:

- Good accommodation and good food
- Quiet and pleasant surroundings in a natural park



3500, Route de Revel - 38870 SAINT-PIERRE DE BRESSIEUX - FRANCE  
Tel. +33 (0) 474 20 02 40 | Fax +33 (0) 474 20 12 29

[www.portrevel.com](http://www.portrevel.com)



DNV Seaskill certified



Coteba & Sogreah, same team, enhanced expertise

[www.arteliagroup.com](http://www.arteliagroup.com)

PORT REVEL SHIPHANDLING  
TRAINING ON MANNED MODELS



Graphic design : ARTELIA \_ V.Lavastre | Photo credits: ARTELIA, Fotolia | Printed on 100% recycled paper using vegetable inks | EDITION 02\_2014 EN | \* may vary according to entity







## AIMING FOR the **best**

Recommended  
by **IMO...**

### MARITIME PILOTS AND MASTERS CARRY A HEAVY RESPONSIBILITY IN OUR MODERN WORLD.

They are put under increasing pressure to ensure their highest proficiency according to IMO's resolution A.960 on training and certification of maritime pilots including:

- . Assessment of pilots' proficiency every 5 years
- . Shiphandling training on manned models

### PORT REVEL OFFERS A DIVERSITY OF COURSES:

- Shiphandling courses for pilots & masters
- Advanced shiphandling course
- Emergency shiphandling
- Experimenting with pods & emergency shiphandling
- Q-Max course

Training on the manned 1:25 scale models is a valuable complement to training on electronic simulators as it provides additional experience through a feeling of "déjà vu".

### NOTHING VIRTUAL AT PORT REVEL

- We have had over 6 500 participants since 1967: mainly from the USA, Canada, Australia, Brazil, Europe and France
- Our instructors are highly experienced maritime pilots
- We have inherited Sogreah's experience with scale models going back nearly a century
- Our fleet of 11 models reproducing over 20 different vessels is by far the biggest
- Our 4 escort tugs are operated by a real tug master under the pilot's orders
- Our lake includes a wave generator, a current generator and a wind generator
- Our lake is highly versatile with very little interference from wind
- Our 5-hectare lake features more shallow water areas: 50% of its surface is shallower than 27.5 m (90 ft)
- Our DGPS allows accurate debriefing of the exercises performed on the lake



#### WE NOW HAVE:

- 10** highly experienced pilot-instructors
- 6** Tankers from 38 000 to 400 000 dwt
- 2** Container ships: 4 400 and 8 500 TEU
- 2** LNG carriers: 125 000 and 265 000 m<sup>3</sup>
- 1** Cruise ship: 2 pods
- 4** Escort tugs:
  - 2 Voith Schneider, 1 ASD propulsion & 1 Carrousel
- 50%** shallow waters (< 27.5 m)
- 40%** of area subject to currents
- Wave generator: **750** m wave front
- Wind generator: up to **40** knots
- 7** km canal
- 50** berths

New Panama locks | Large harbour area | SBM | CPP